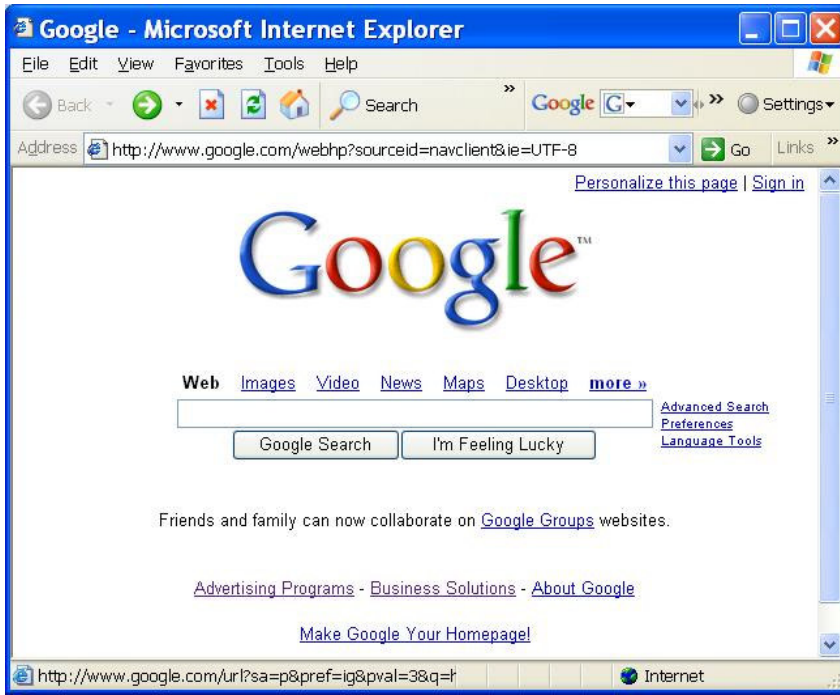


Verify Site/ Creating Google Sitemap

Steps 1-9: Setting up and Logging into your account.

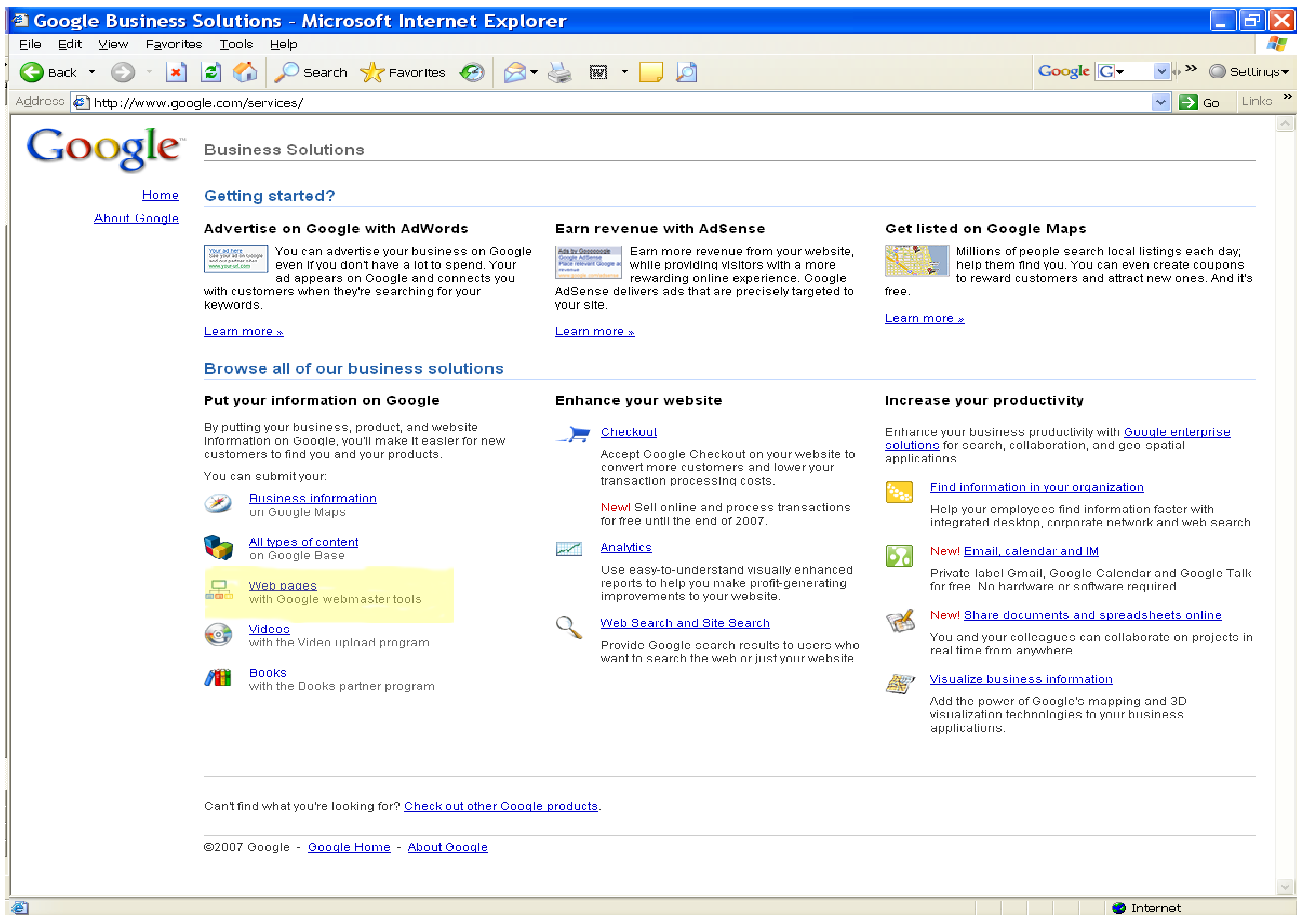
Step 1. Goto www.google.com.



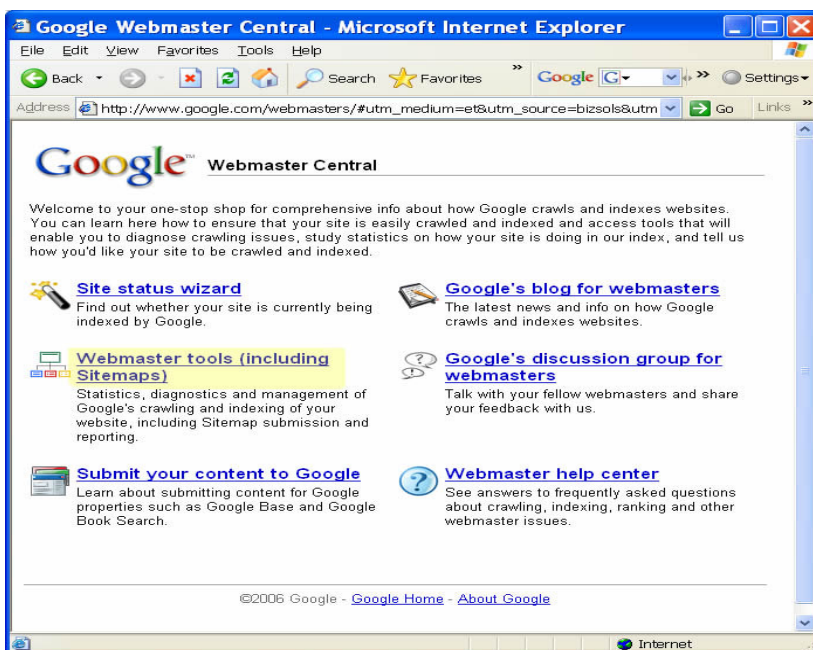
Step 2. Click on “**Business Solutions**”



Step 3. Click on “Web Pages”



Step 4. Click on “Webmaster tools (including Sitemaps)”



Note: If you have a Google account you can login.

Step 5. If not click on “[Create a Google Account](#)”

Google Webmaster Tools

Google's webmaster tools provide you with a free and easy way to make your site more Google-friendly. Using our tools, you can:

- Get Google's view of your website, and diagnose potential problems.** See how Google crawls and indexes your site and learn about specific problems we're having accessing it.
- See how your site is performing.** Learn which queries drive traffic to your site, and see exactly how users arrive there.

Sign in to Google Webmaster Tools with your **Google Account**

Email:

Password:

☒ Remember me on this computer.

[I cannot access my account](#)

Not using Gmail or other Google Account services?

[Create a Google Account](#)

Learn more about Google webmaster tools:

- [About Google webmaster tools](#)
- [Google webmaster central](#)
- [Webmaster help center](#)
- [Google webmaster discussion group](#)

Query stats

Choose search type:

Choose search location:

All searches: All locations

Rate this tool:

Top search queries	Average top position
1. google	2
2. google maps	5
3. google mail	5
4. google video	8
5. "www.google"	3

Rate this tool:

Top search query clicks	Average top position
1. google	2
2. translate	2
3. "www.google"	3
4. calendar	3
5. google talk	1

Step 6. Google Account Setup Screen

Fill in the form, Click "[I Accept. Create my account](#)". Located at the bottom of page.

Required information for Google account

Your current email address:
e.g. myname@example.com. This will be used to sign-in to your account.

Choose a password: [Password strength:](#) **Weak**
Minimum of 6 characters in length.

Re-enter password:



☐ Remember me on this computer.

Creating a Google Account will enable Search History. Search History is a feature that will provide you with a more personalized experience on Google that includes more relevant search results and recommendations. [Learn More](#)

☒ Enable Personalized Search.

Get started with Google Webmaster Tools

Location:

Word Verification: Type the characters you see in the picture below.

 
Letters are not case-sensitive

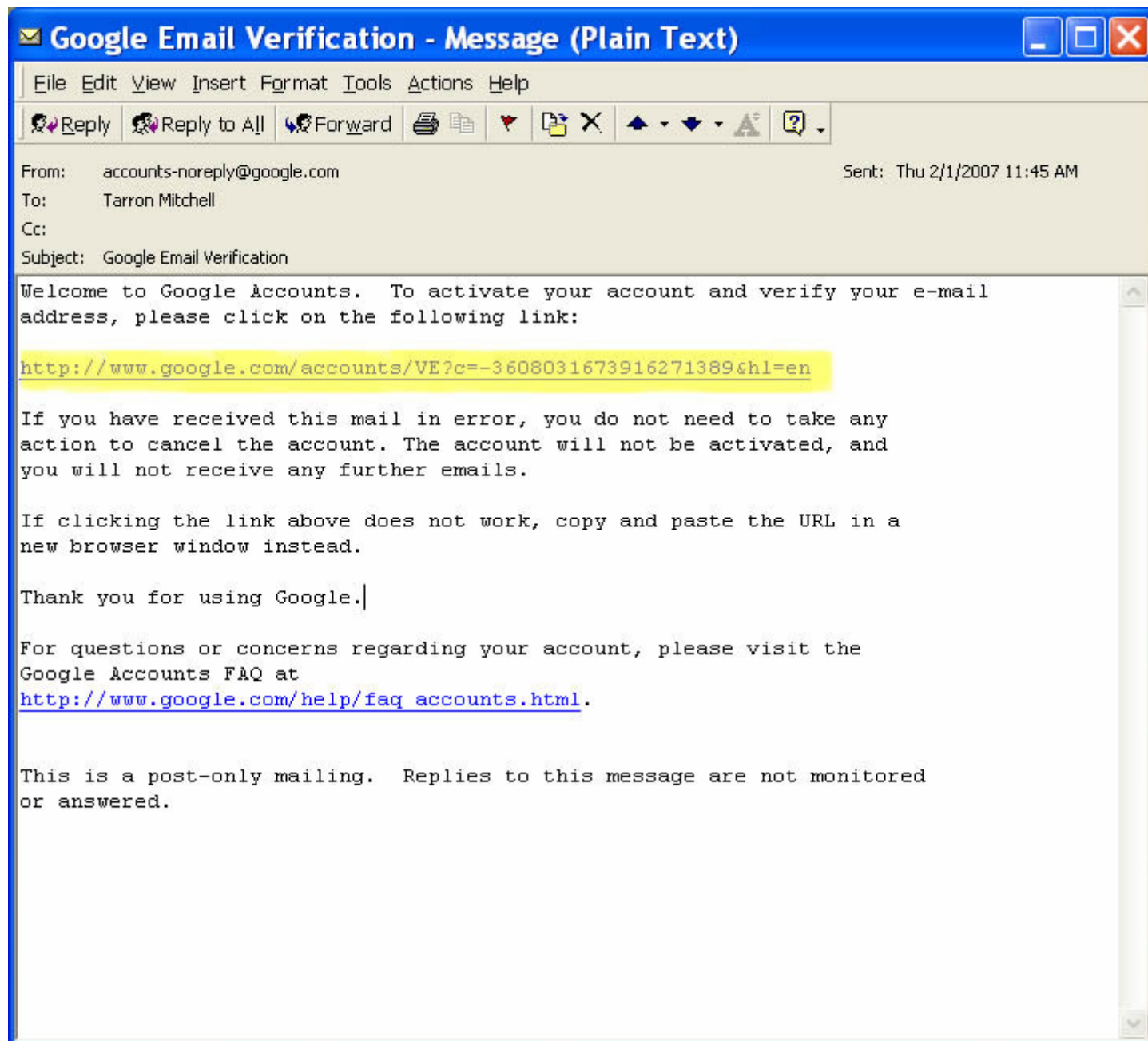
Terms of Service: Please check the Google Account information you've entered above (feel free to change anything you like), and review the Terms of Service below.
[Printable Version](#)

Google Terms of Service for Individual Use

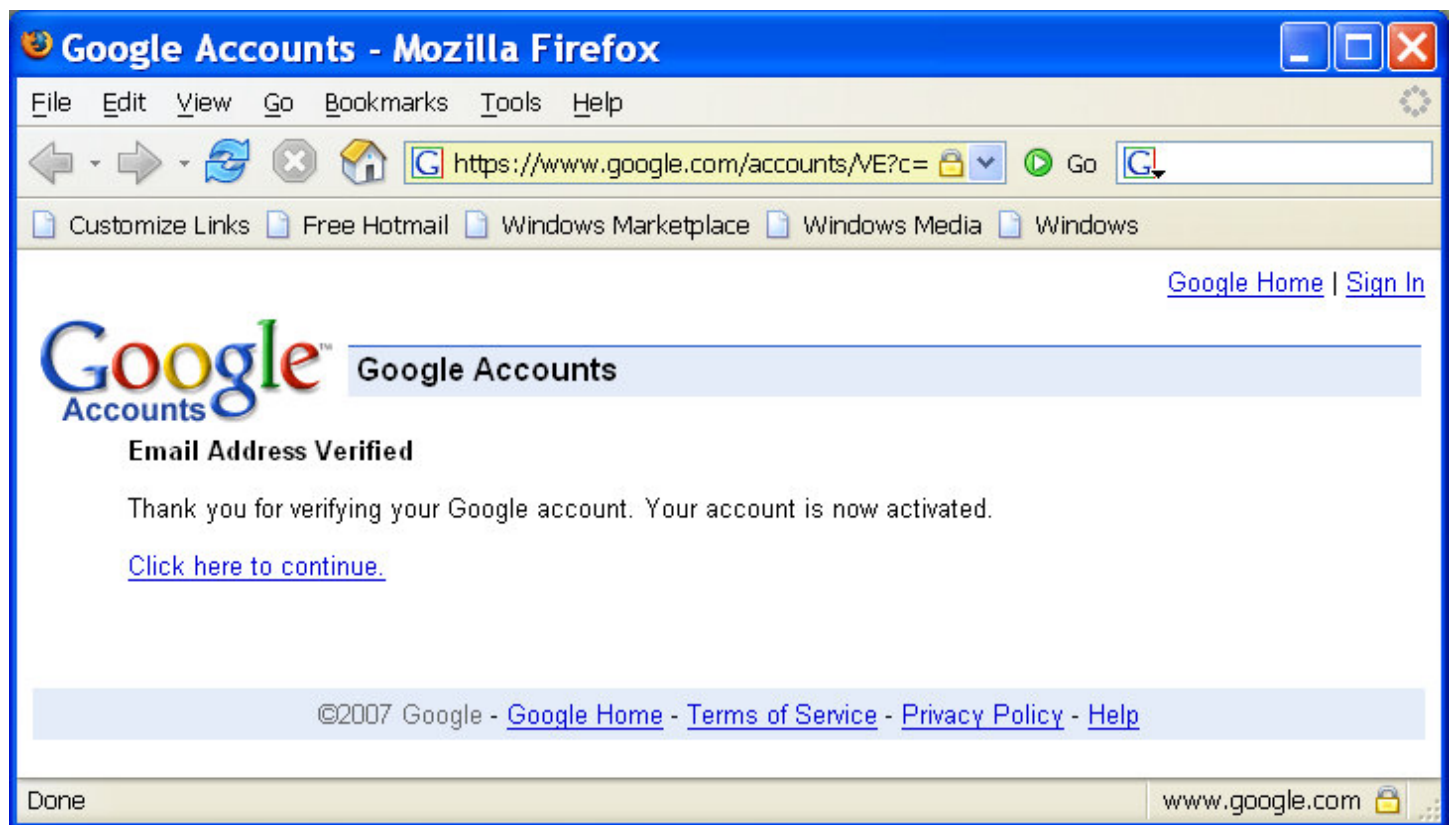
Welcome! By using Google's search engine or other Google services ("Google Services"), you agree to be bound by the following terms and conditions (the "Terms of Service"). As

By clicking on 'I accept' below you are agreeing to the [Terms of Service](#) above and the [Privacy Policy](#).

Step 7. After form has been submitted you will received an email to activate your account. Click on the link that you receive in that email to activate your account.

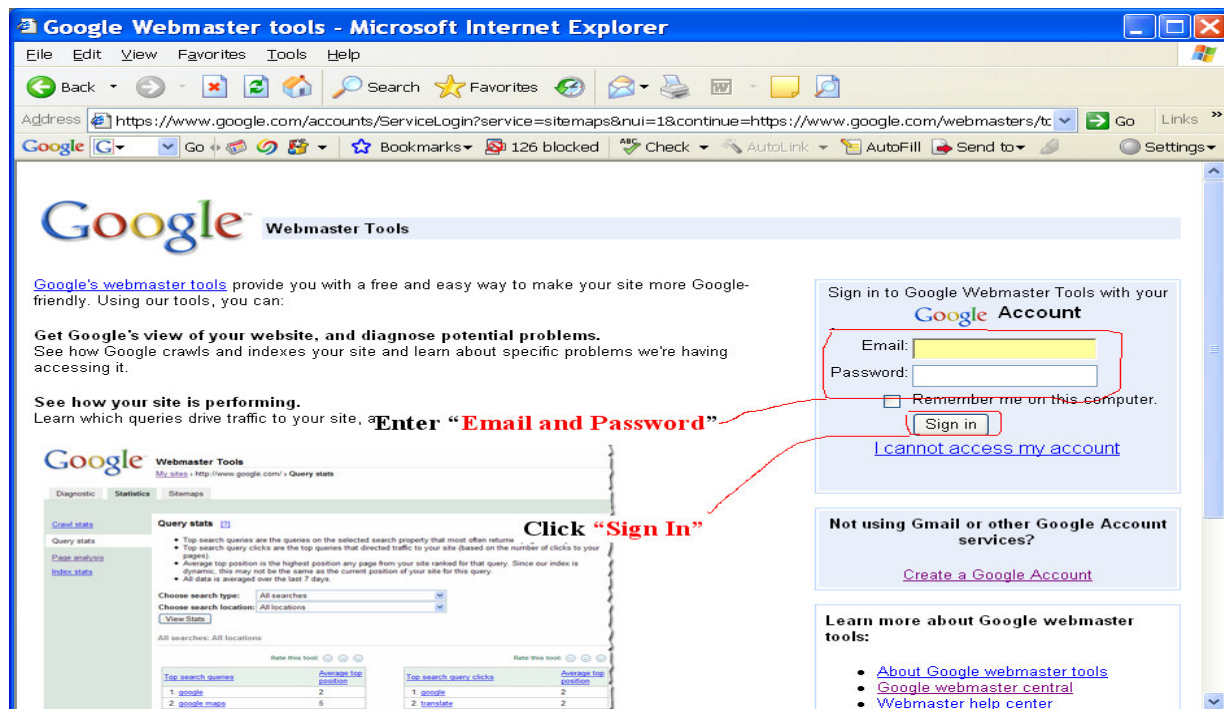


Step 8. Click on “[Click here to continue](#)”



Note: This action will bring you back to the Webmaster Tools Page.

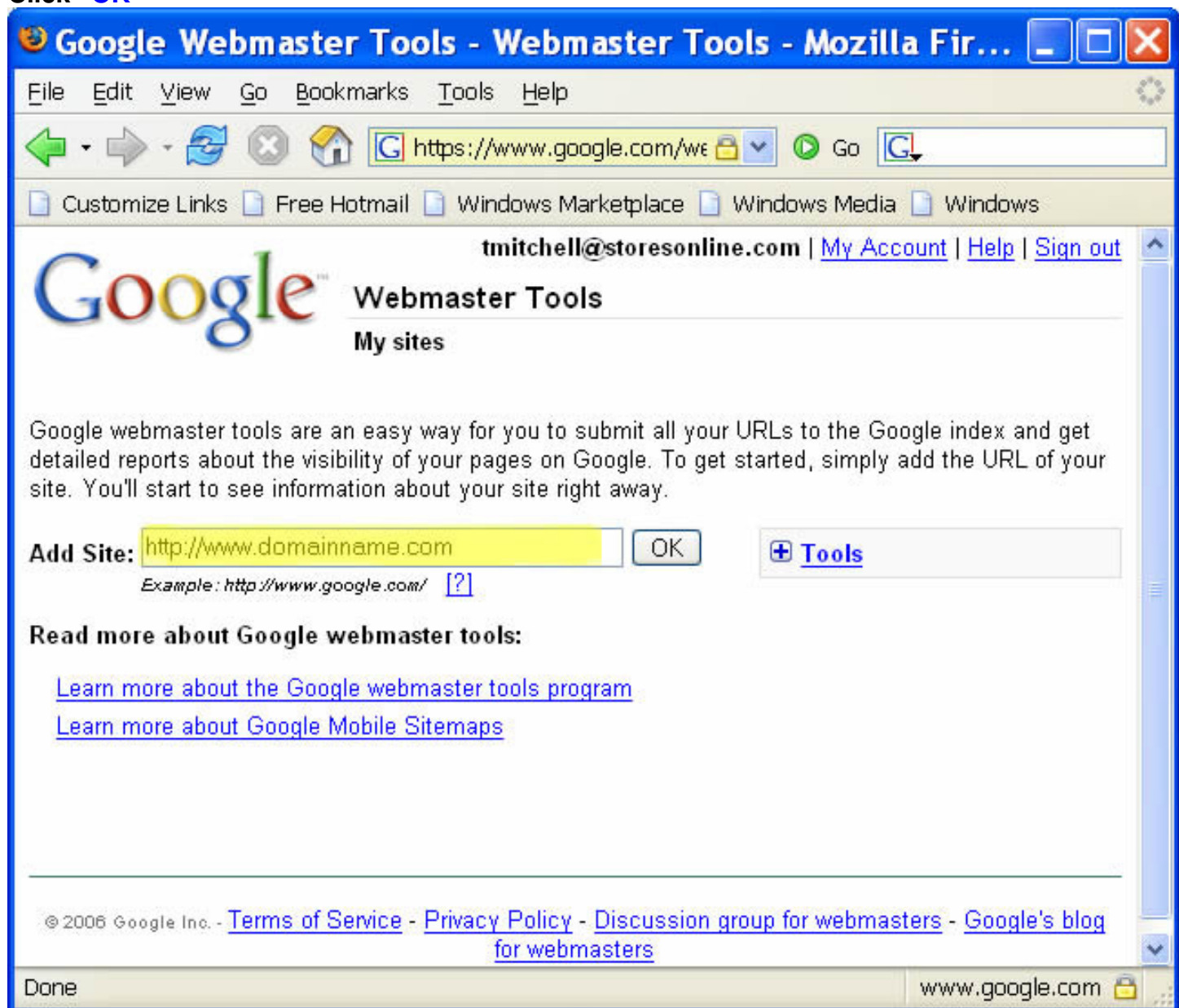
Step 9. Click “[Insert email address and password and Sign In](#)”



Steps 10-17: Verify your Site

Step 10. Next Add URL “<http://www.domainname.com>” to the Add Site field.

Click “OK”



Step 11a. Verify Your Site: Click Text Link “Verify your site”

Google Webmaster Tools - Summary - Microsoft Internet Explorer

Address: <https://www.google.com/webmasters/tools/summary?siteurl=http%3A%2F%2Fwww.taeselectronics.com%2F&msg=28hl=en>

Google Webmaster Tools

My sites > <http://www.taeselectronics.com/> > Summary

Diagnostic | Statistics | Sitemaps

Summary

Rate this tool: ⭐ ⭐ ⭐

Next Step

[Verify your site.](#) By verifying your site you can access comprehensive statistics and crawl errors about the pages in your site

Indexing

Home page crawl:	✓ Googlebot last successfully accessed your home page on Jan 13, 2007.
Index status:	✓ Pages from your site are included in Google's index. See index stats . [2]

Find more answers in our [help center](#), including:

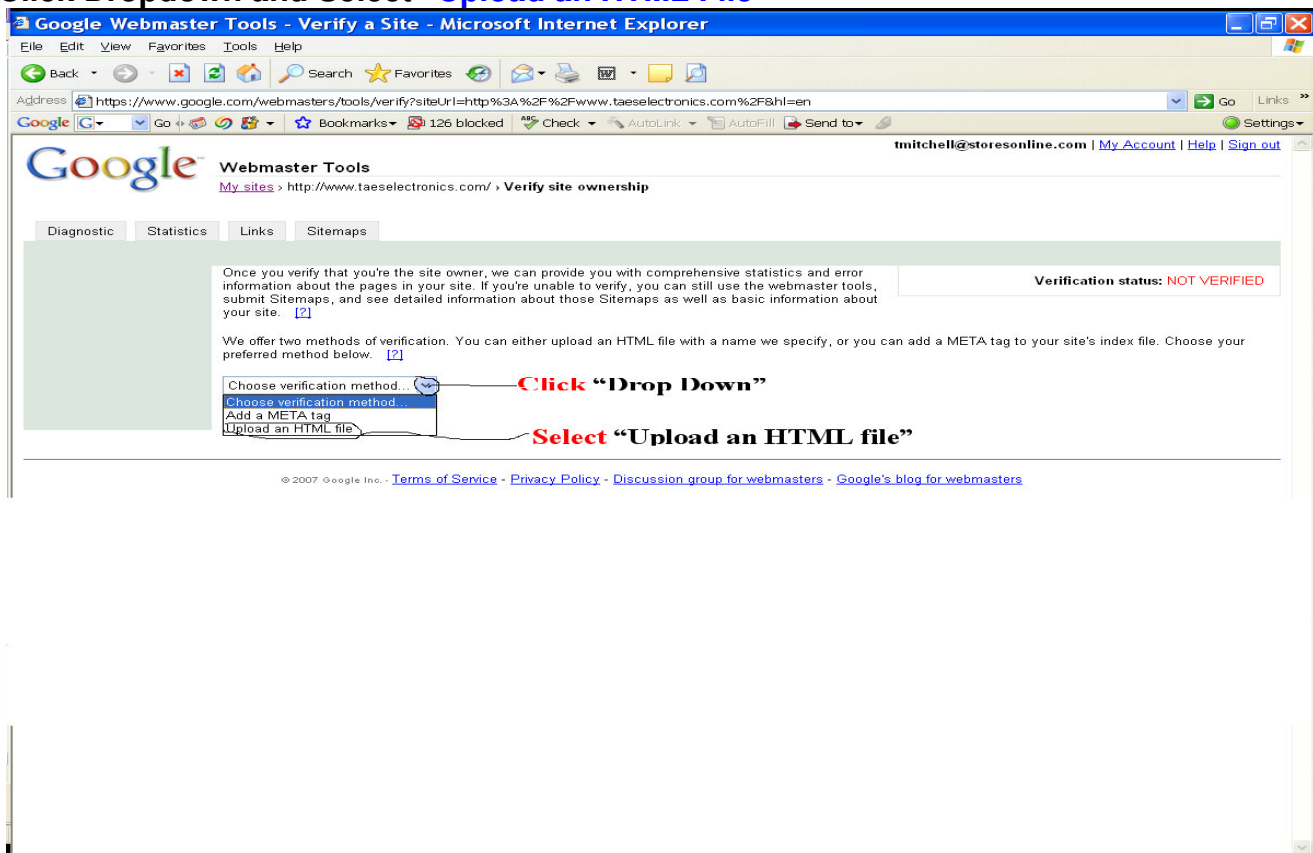
- [How can I improve my site's ranking?](#)
- [Why doesn't my site show up for a specific keyword?](#)
- [Why is my page's location in the search results lower than before?](#)

Click “Verify your site”

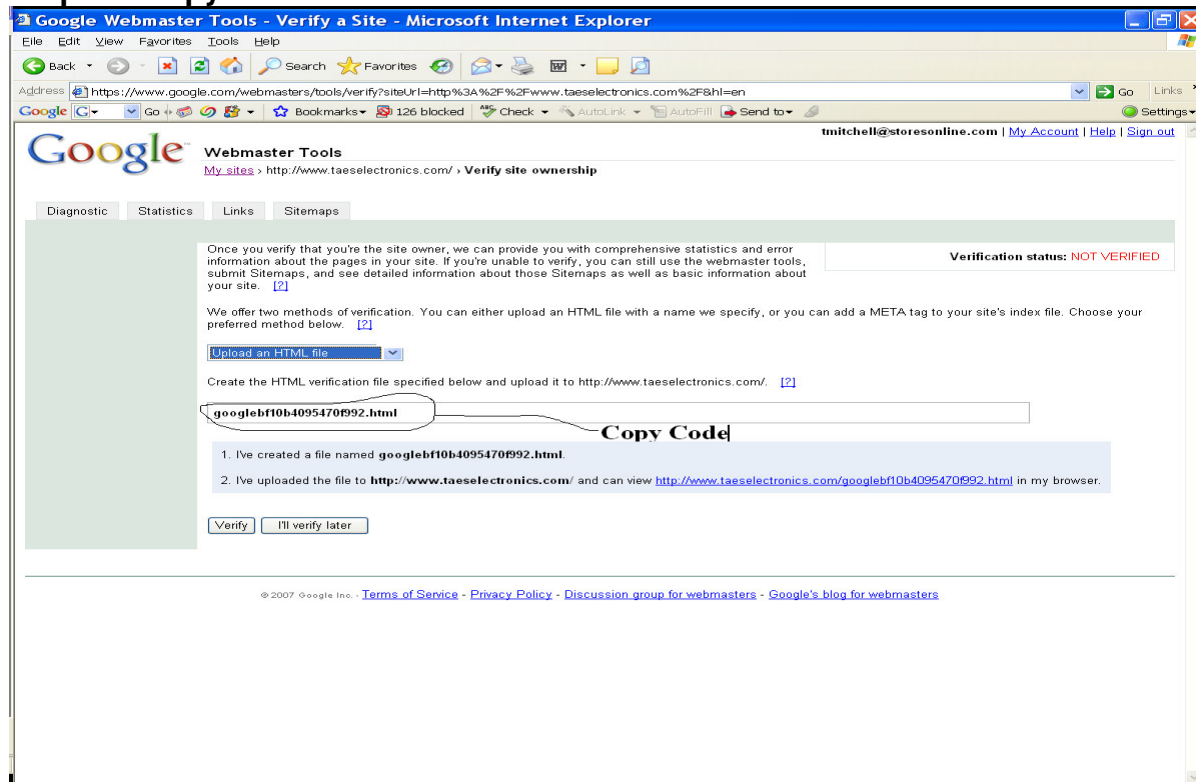
© 2006 Google Inc. - [Terms of Service](#) - [Privacy Policy](#) - [Discussion group for webmasters](#) - [Google's blog for webmasters](#)

Step 12. Choose Verification Method

Click Dropdown and Select “Upload an HTML File”



Step 13. Copy Verification Code.



Note: Below are examples for entering Google Verification File in 4.0 and Pro. After completing one of the processes 4.0 or Pro. Please continue with process by returning to Google site and clicking “**VERIFY**” to complete the verification of your site.
See illustrations 16 and 17 below for completing verification.

Note: Please Publish Site After Adding Google File.

Step 14. 4.0 Site “Paste Google Verification code”
Example of code: “google2af636d0199e7391.html”

The screenshot shows a web browser window with the address bar displaying "https://www.storesonline.com - Account URL - 1648803 - Micro...". The browser's address bar and search bar are visible. The main content area is titled "Storefront" and contains a navigation menu with tabs: Pages, Products, Ordering Rules, Forms, Customers, Orders, Stats, and Publish. Below the navigation menu is a section titled "URL" with a "Log Out" link. The "URL" section contains the following text: "Here you can customize your storefront's URL (rather than using www.storesonline.com/site/YOURLICENSENUMBER). Any text you type into the field below will take the place of your license number in your storefront's URL. (Select the **Help** button for more information.)". Below this text are two input fields: "Custom URL" with the value "http://www.storesonline.com/site/taeselectroniccom" and "Default URL" with the value "http://www.storesonline.com/site/1648803/". Below these fields is a note: "If you want to use a registered domain name, contact Customer Service at help@storesonline.com or call (801) 227-0004." Below the note is a red arrow pointing to the "Google Verification File" field with the text "Paste Verification Code Here". The "Google Verification File" field contains the value "google2af636d0199e7391.html" and a "Create File" button. Below the "Google Verification File" field is a "Yahoo Verification File" field and a "Yahoo File Content" field, both with "Create File" buttons. At the bottom of the page are "Help" and "Preview..." buttons. The footer of the page reads "Copyright © 2005 StoresOnline, Inc. All rights reserved." The browser's status bar at the bottom shows "Internet".

Step 15. Pro Site Steps

a. Add a page

Pages

Name	Background	URL		
Products	Default Background	http://woodengiftsonline.com/products	✓	✓
Order Checkout	Default Background	http://woodengiftsonline.com/checkout	✓	✓
Home	Default Background	http://woodengiftsonline.com/home	✓	✓
Shipping Information	Default Background	http://woodengiftsonline.com/shipping	✓	✓
Privacy Policy	Default Background	http://woodengiftsonline.com/privacy	✓	✓
Contact Us	Default Background	http://woodengiftsonline.com/contact	✓	✓
Order Now	Default Background	http://woodengiftsonline.com/product		
Cart Review	Default Background	http://woodengiftsonline.com/cart	✓	
Order Tracking	Default Background	http://woodengiftsonline.com/tracking	✓	
About Us	Default Background	http://woodengiftsonline.com/about		
Links	Default Background	http://woodengiftsonline.com/links		
Price Set	Default Background	http://woodengiftsonline.com/page/243		
Search	Default Background	http://woodengiftsonline.com/search		
Page Not Found!	Default Background	http://woodengiftsonline.com/notfound		
Form	Default Background	http://woodengiftsonline.com/form		
Category	Default Background	http://woodengiftsonline.com/category		
Profile	Default Background	http://woodengiftsonline.com/customer		
Login	Default Background	http://woodengiftsonline.com/login		
Coupon	Default Background	http://woodengiftsonline.com/coupon		
Unsubscribe	Default Background	http://woodengiftsonline.com/unsubscribe		
Forum	Default Background	http://woodengiftsonline.com/forum		
Bowls	Default Background	http://woodengiftsonline.com/page/1021243		

Add **Delete** **Edit**

Click Add to "Add Page"

Help... Preview

Copyright © 1998-2006 Imergent Inc. All rights reserved.

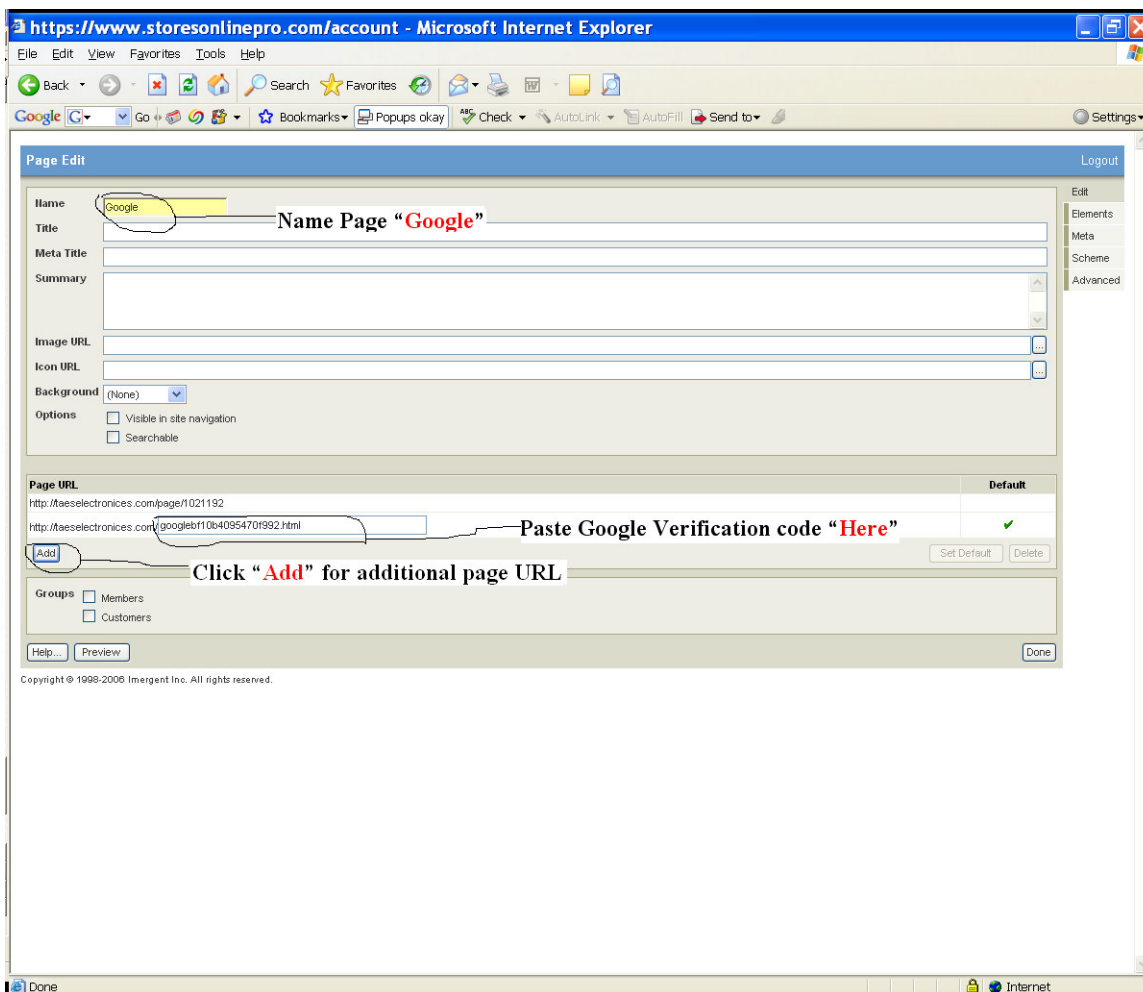
Done Internet

b. Name it Google

c. Add Page Url

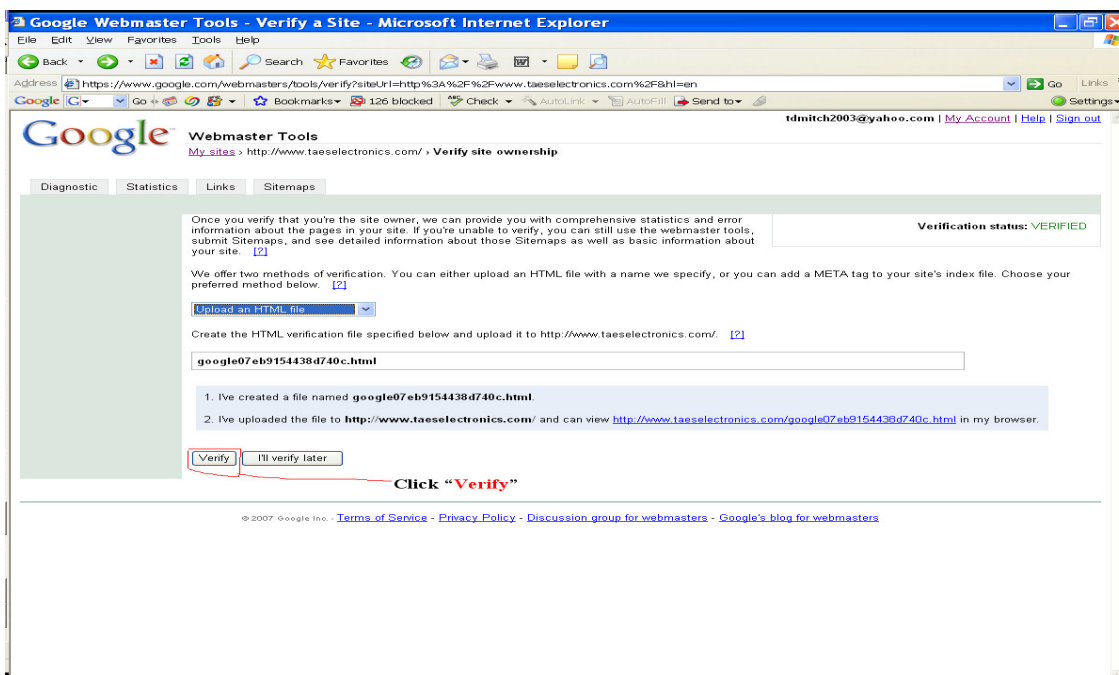
d. Paste Google Verification Code

e. Set as Default



Note: Please Publish Site After Adding Google Verification Code.

Step 16. Click "Verify"



Step 17. Verified Page

The screenshot shows the Google Webmaster Tools interface in a Microsoft Internet Explorer browser window. The address bar displays the URL: <https://www.google.com/webmasters/tools/diagnostic?hl=en&siteUrl=http://www.taaselectronics.com/&msg=5>. The page title is "Google Webmaster Tools - Summary - Microsoft Internet Explorer". The main content area shows the "Summary" tab selected, with a sub-tab "My sites" showing "http://www.taaselectronics.com/". A red box highlights the verification status: "✓ You've successfully verified http://www.taaselectronics.com/". A red arrow points from this box to the text "Your Site Has Been Verified". Below this, the "Indexing" section shows "Home page crawl:" as "✓ Googlebot last successfully accessed your home page on Jan 13, 2007." and "Index status:" as "✓ Pages from your site are included in Google's index. See [Index stats](#) [2]". The "Web crawl errors" section shows a table with the following data:

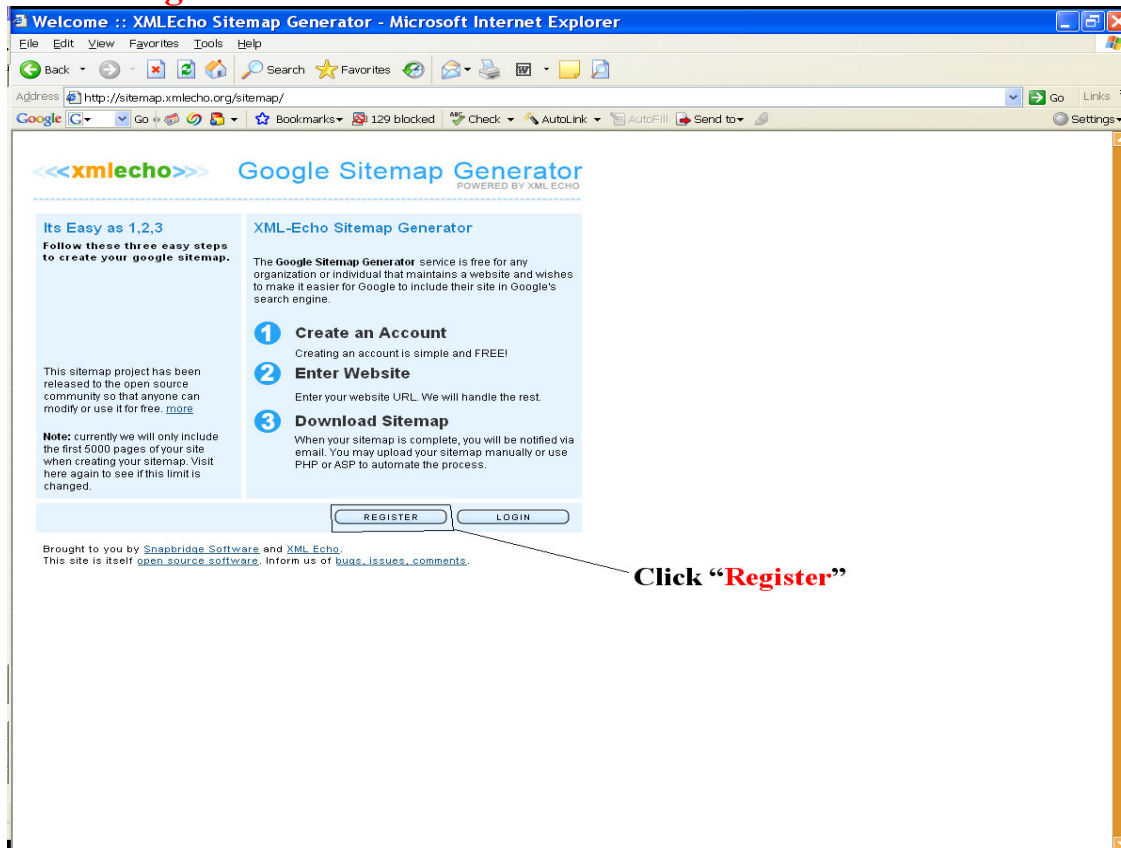
Web crawl errors		
HTTP errors	✓ 0	--
Not found	⚠ 1	Details >
URLs not followed	✓ 0	--
URLs restricted by robots.txt	✓ 0	--
URLs timed out	✓ 0	--
Unreachable URLs	✓ 0	--
Total:	1	

At the bottom, there is a link to the "help center" and a list of links: "How can I improve my site's ranking?", "Why doesn't my site show up for a specific keyword?", and "Why is my page's location in the search results lower than before?". The footer contains copyright information: "© 2007 Google Inc. - [Terms of Service](#) - [Privacy Policy](#) - [Discussion group for webmasters](#) - [Google's blog for webmasters](#)".

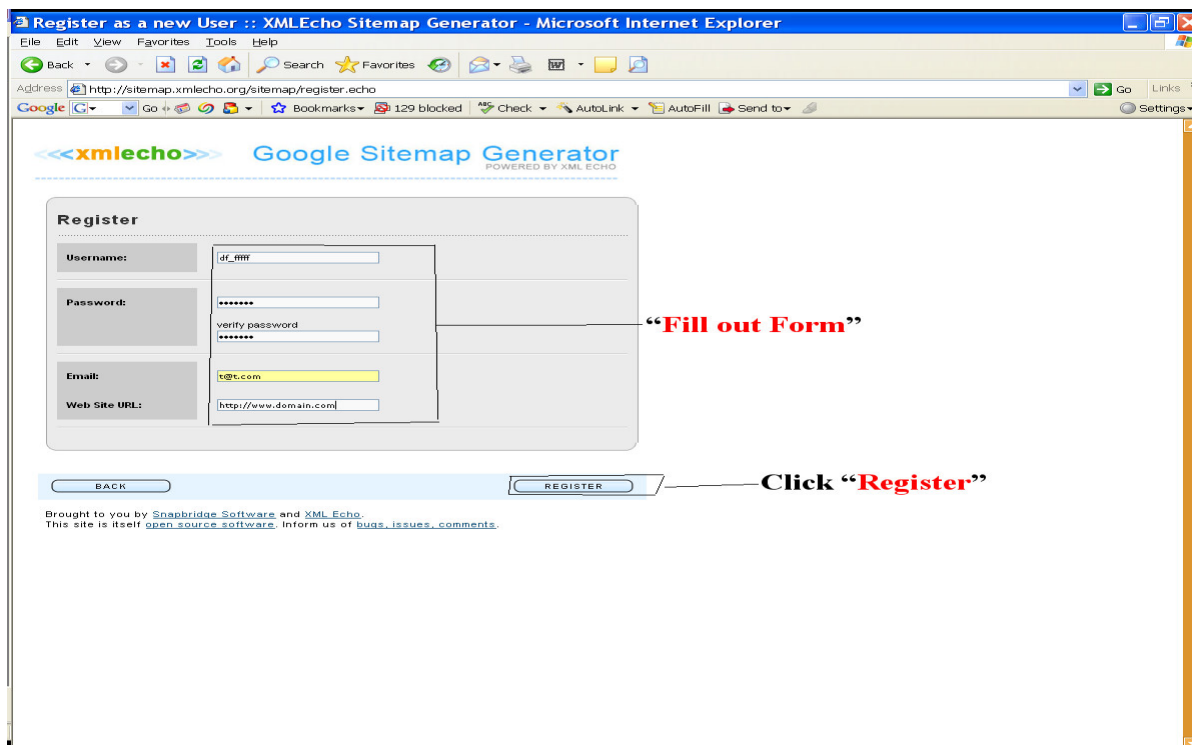
Step 18. Generate sitemap.xml file.

Go to <http://sitemap.xmlcho.org/sitemap/>

Click **“Register”**

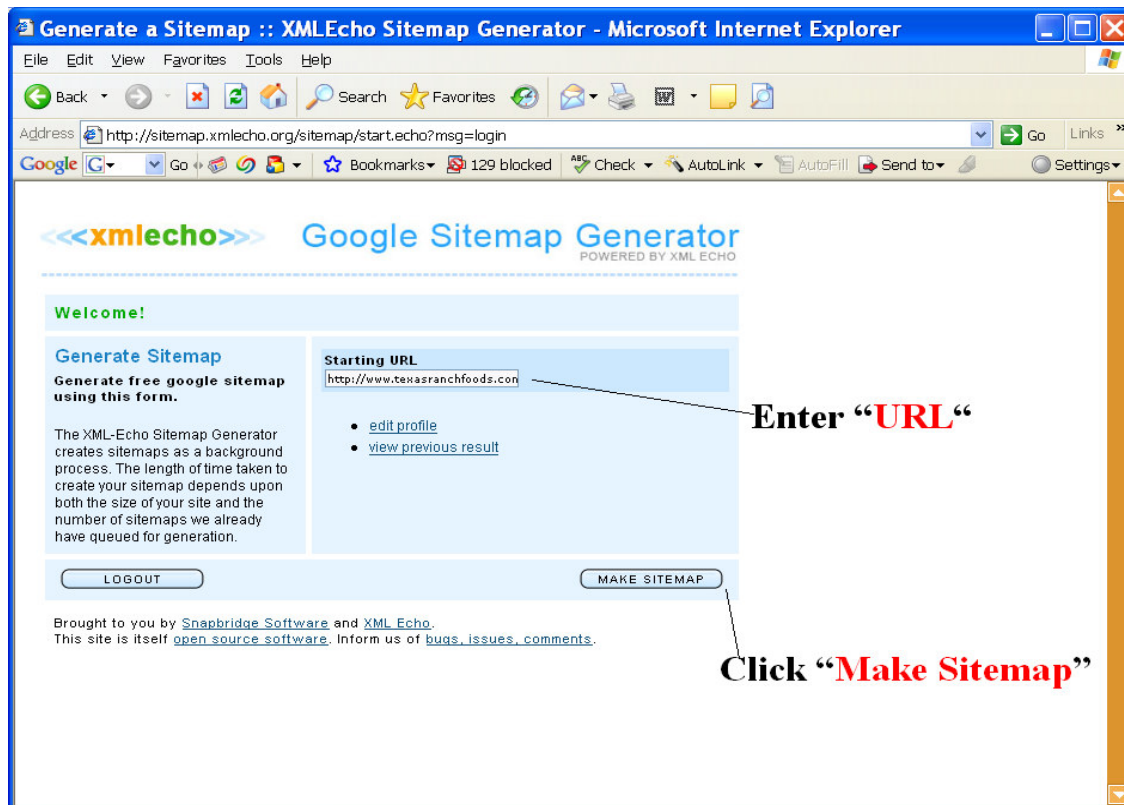


a. Fill out Registration Form Click **“Register”**:

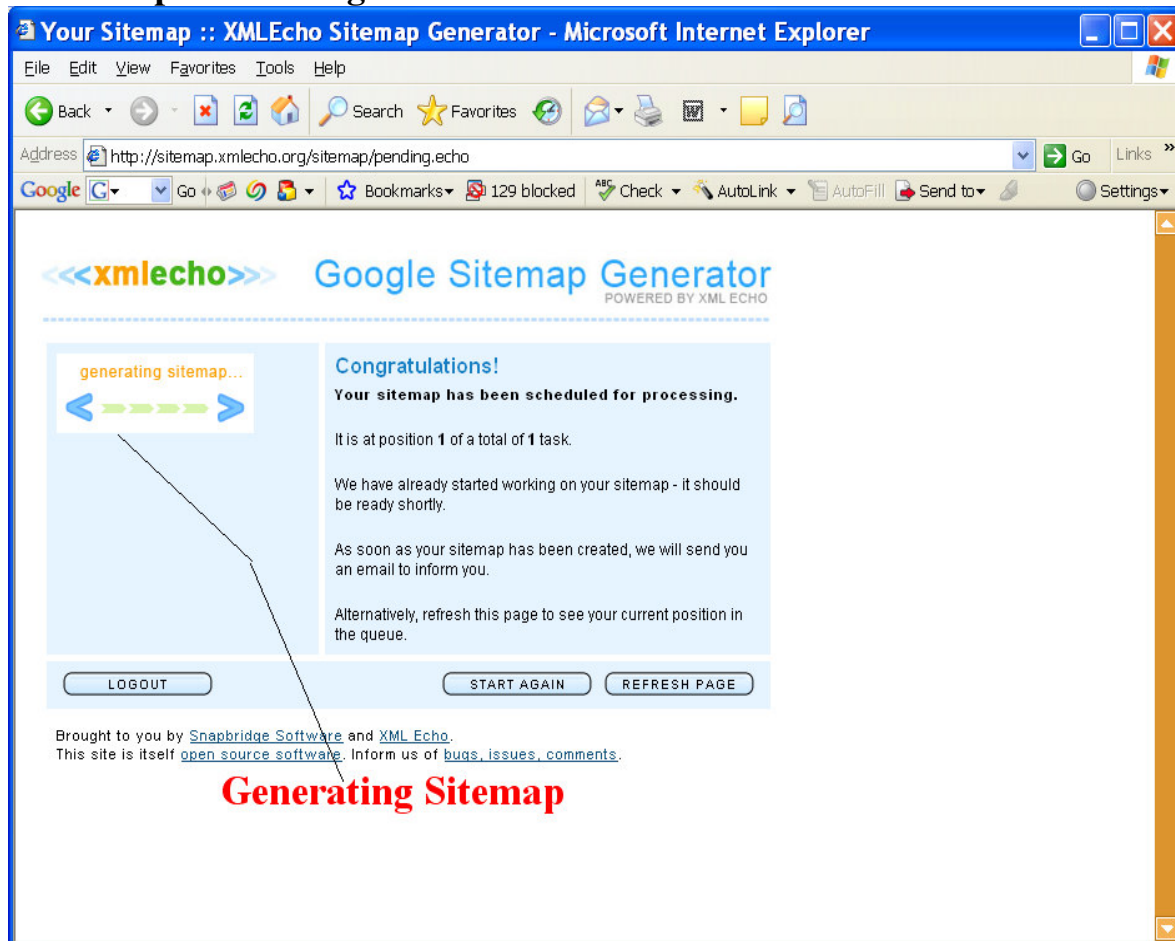


b. Enter **“URL”**

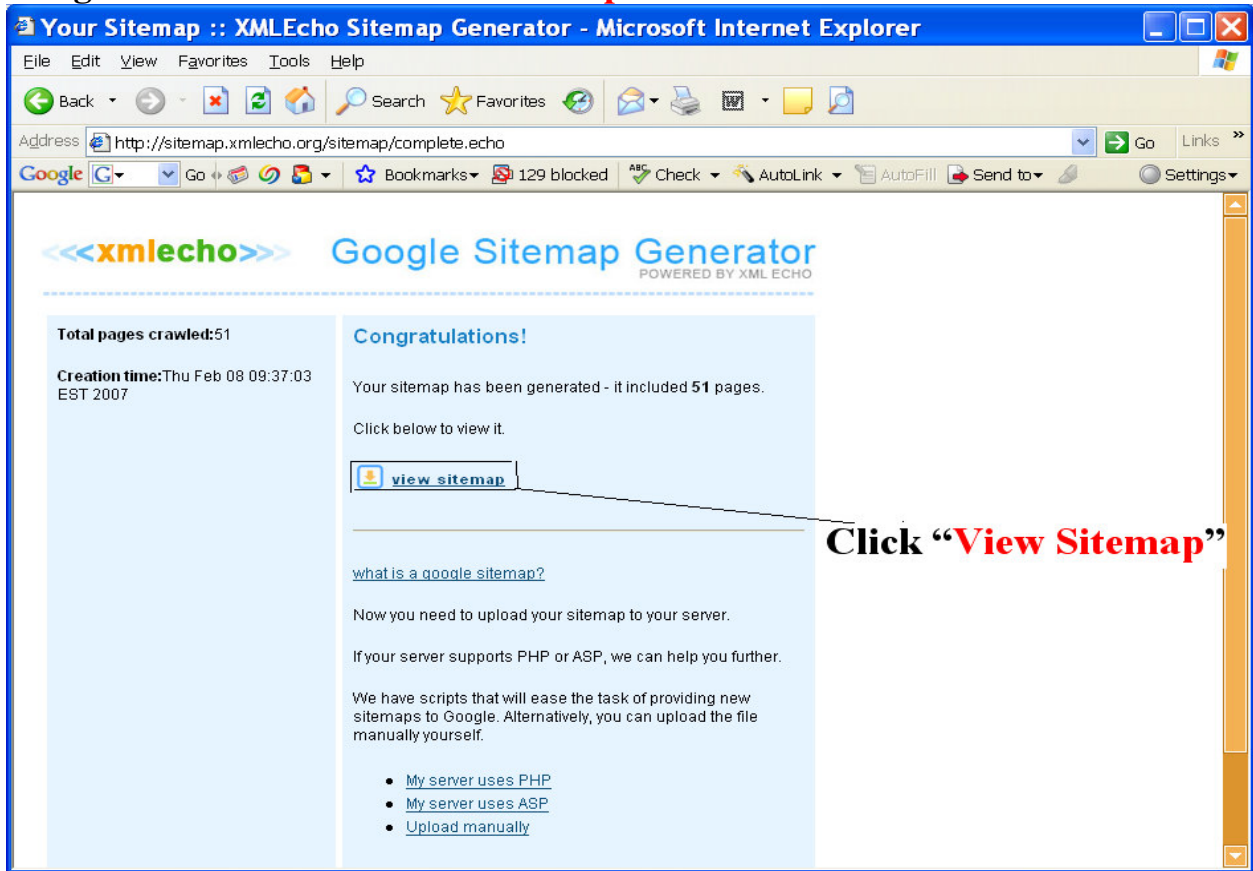
c. Click **“Make Sitemap”**



c. Sitemap Generating!

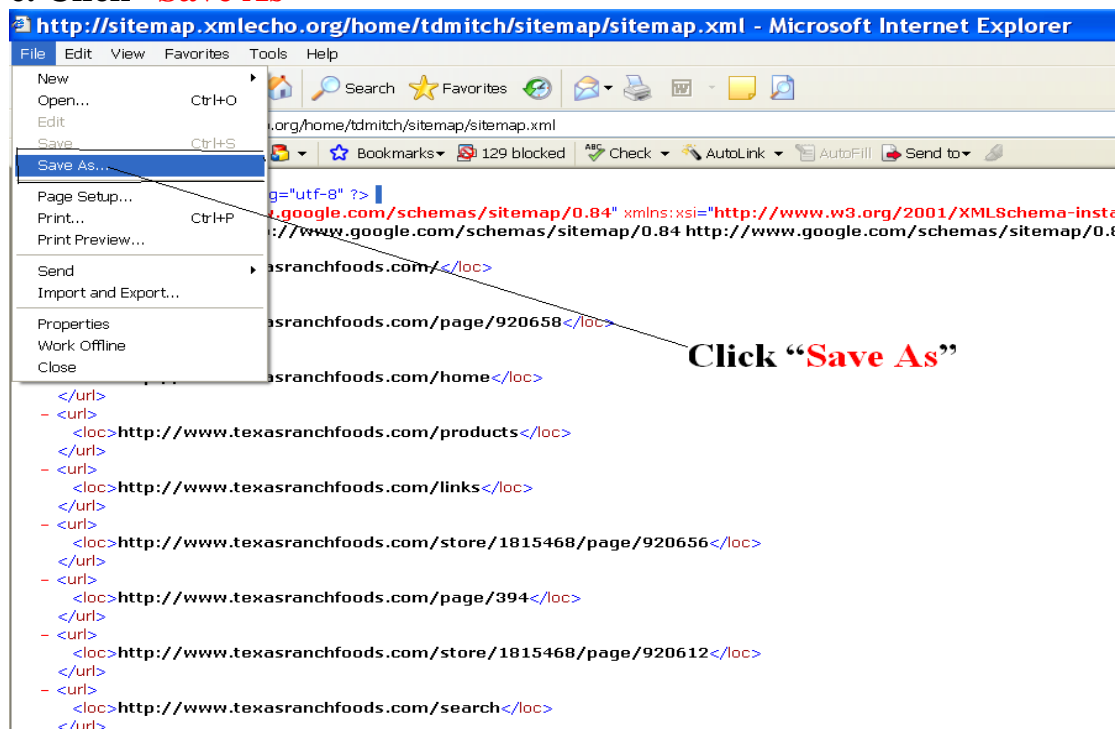


d. Congratulations! Click “View Sitemap”

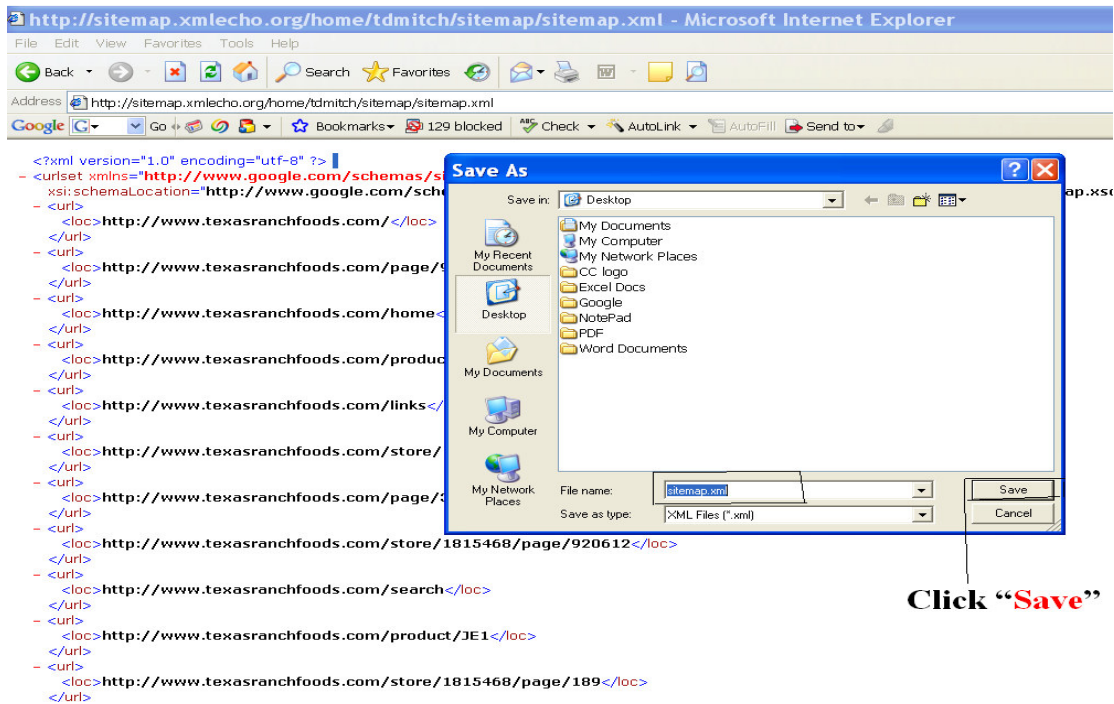


Generated XML Sitemap:

e. Click “Save As”



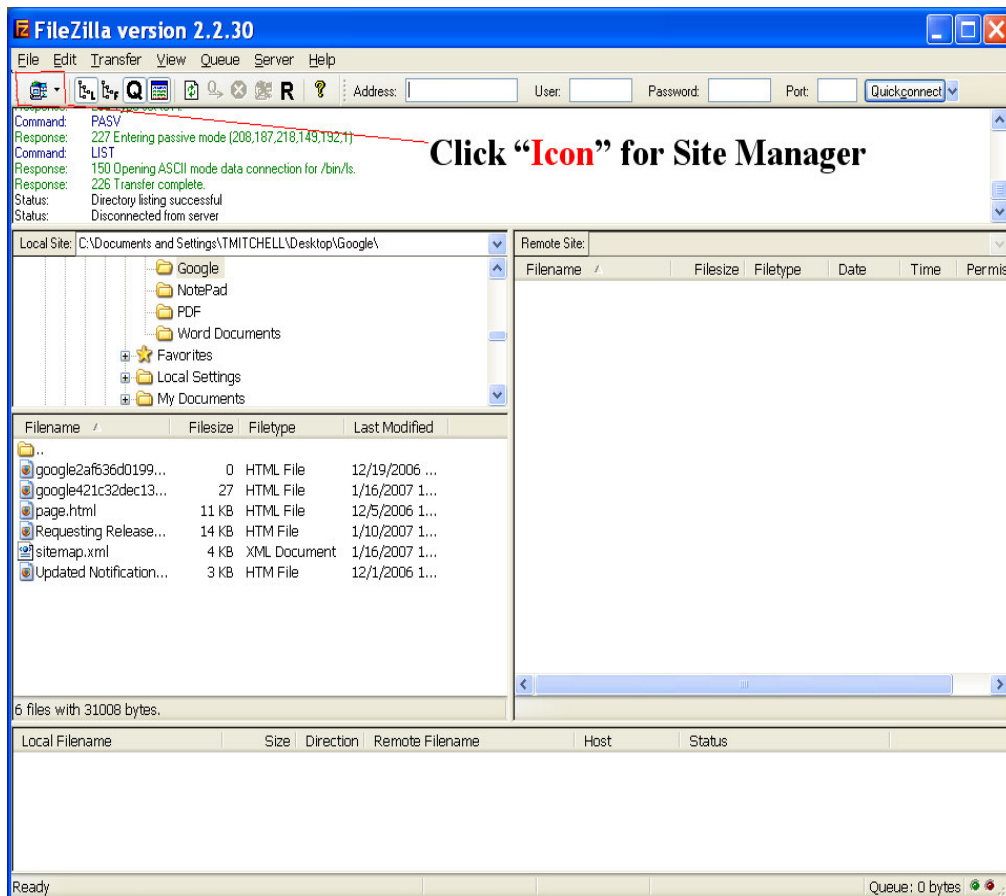
f. Click **“Save”**



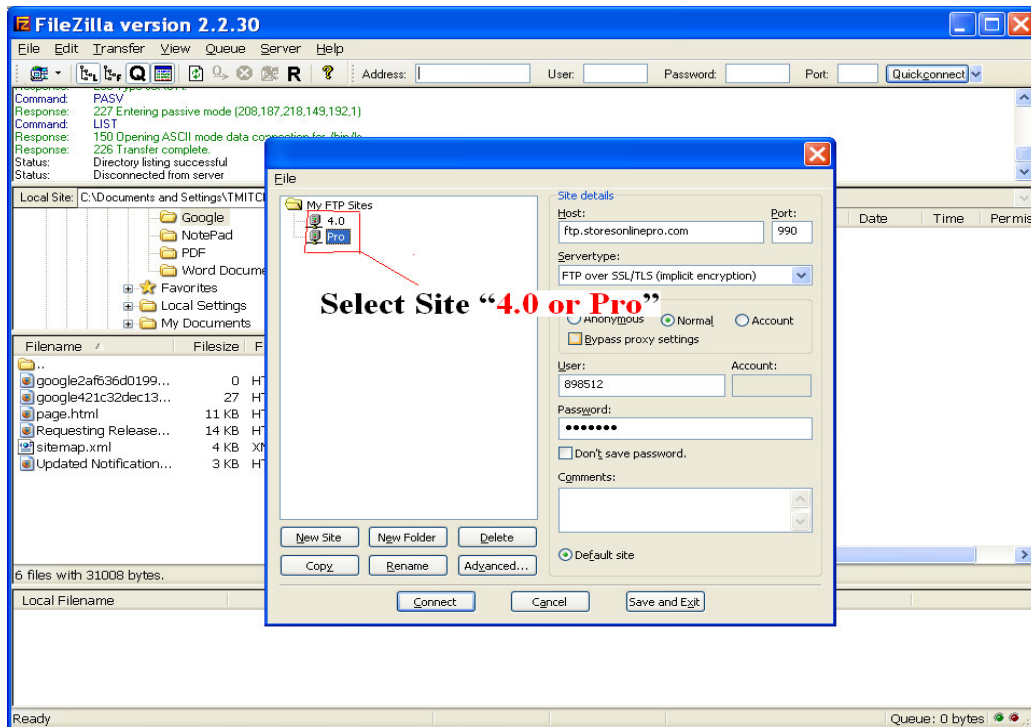
Step 19. Uploading “sitemap.xml” file using “FTP” (File Transfer Protocol).

Note: FTP or File Transfer Protocol is used to connect two computers over the Internet so that the user of one computer can transfer files and perform file commands on the other computer.

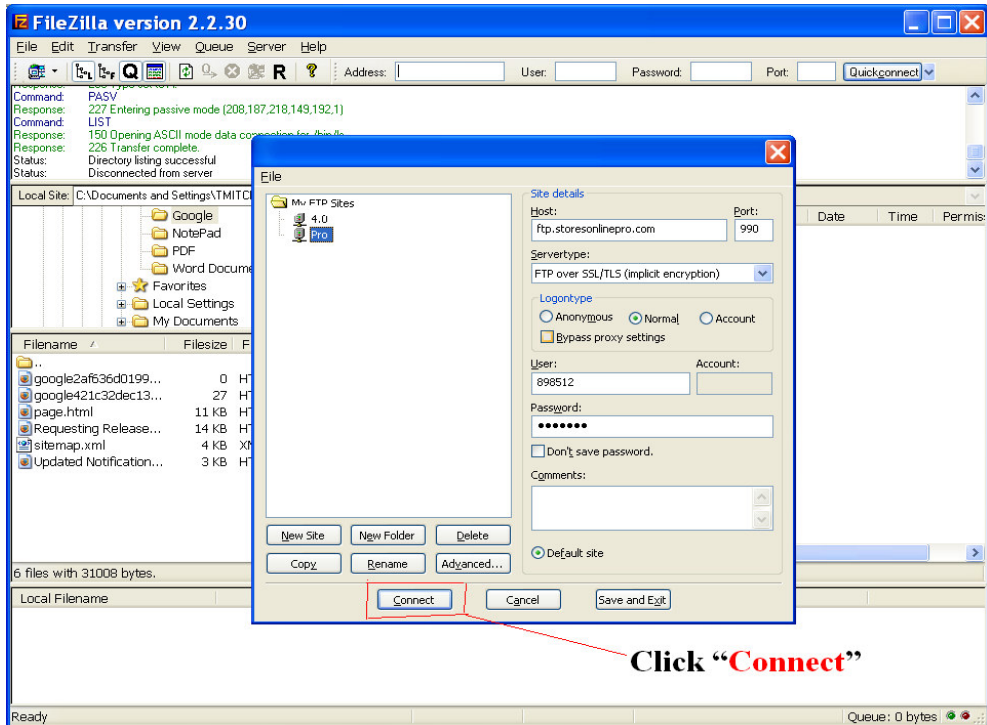
a. Click **“Icon”** for Site Manager



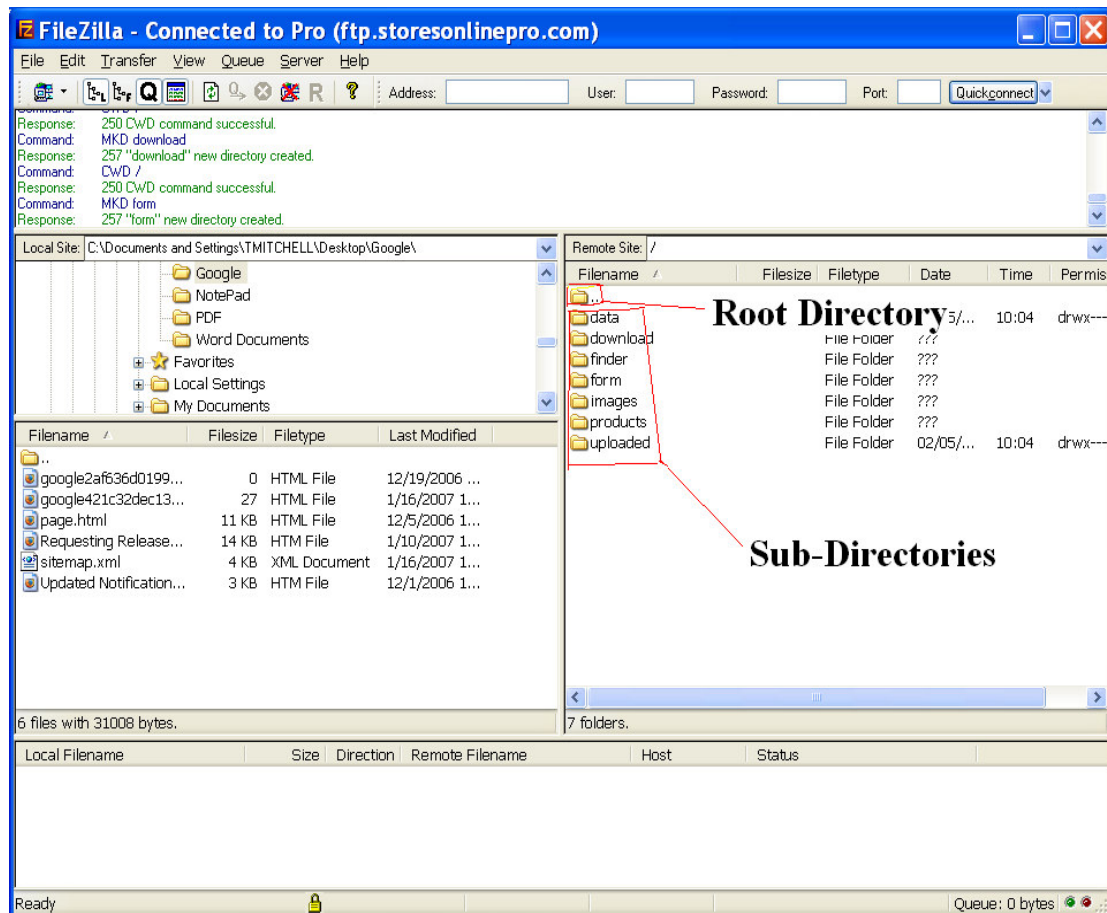
b. Select Site "4.0 or Pro"



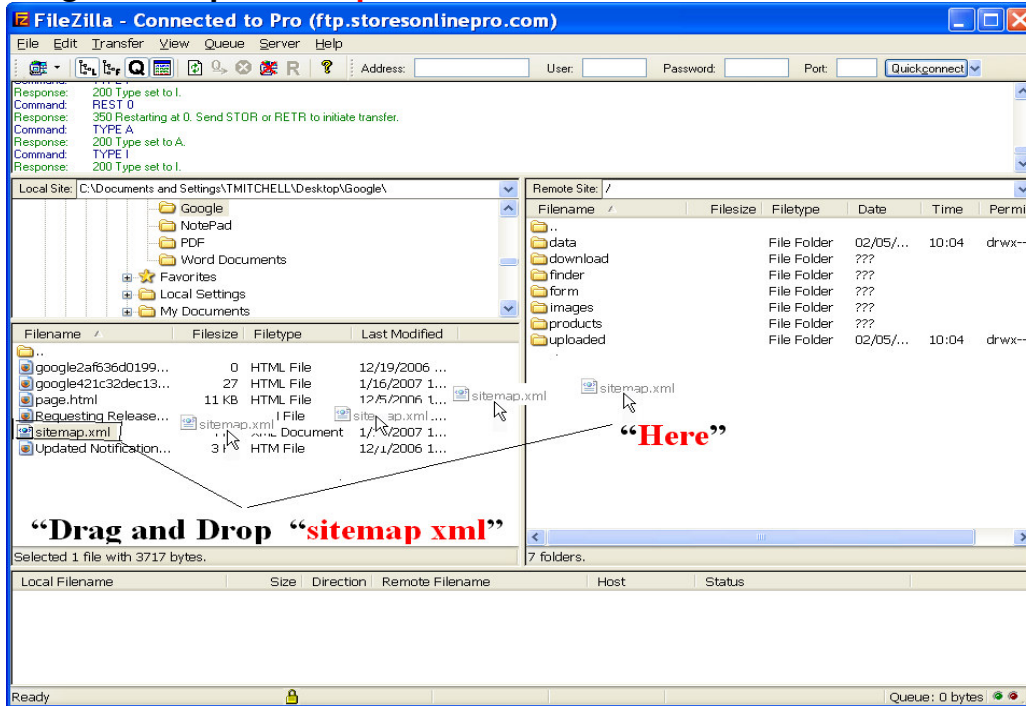
c. Click **“Connect”**



d. FTP connected:

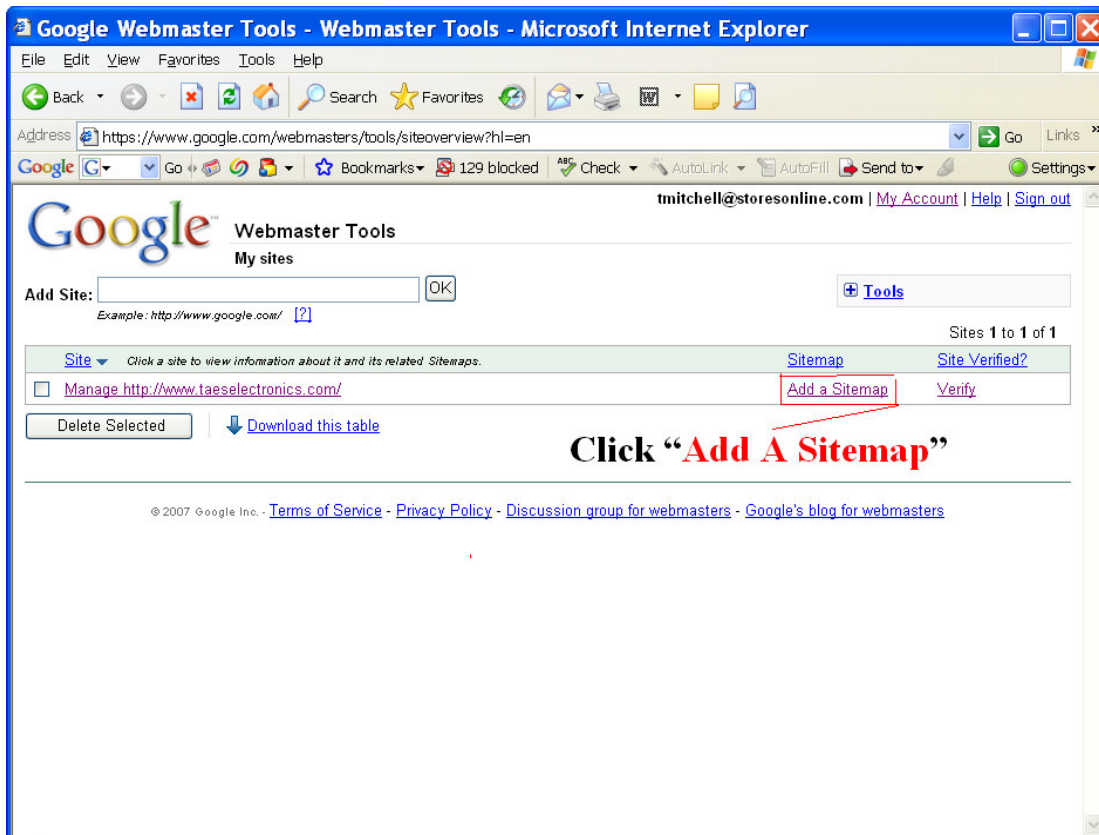


e. Drag and Drop “sitemap.xml”

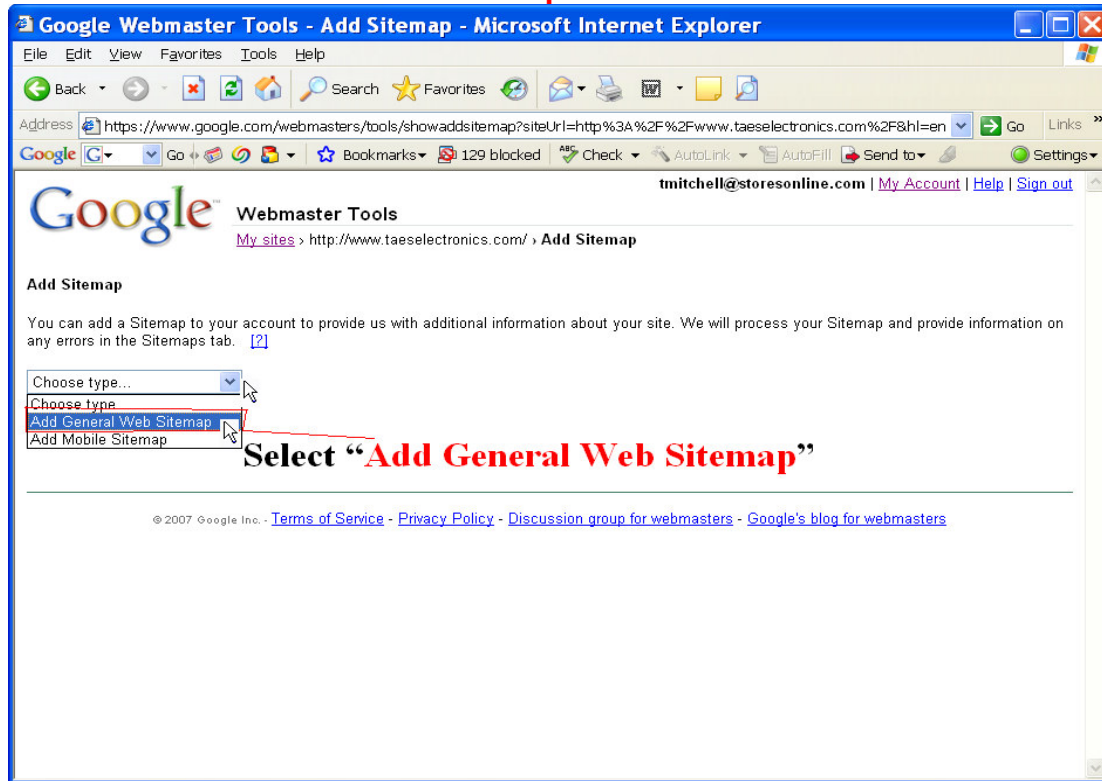


Step 20. Add Sitemap to Google:

- Login to Google Account
- Click “Add A Sitemap”



c. Select **“Add General Web Sitemap”**



d. Enter **“URL”** ex: <http://www.domainname.com>

e. Click **“Add Web Sitemap”**



You have Added a Sitemap Final Screen:

Google Webmaster Tools - Sitemaps - Microsoft Internet Explorer

File Edit View Favorites Tools Help

Back Forward Stop Home Search Favorites Reload Print W Go Links

Address <https://www.google.com/webmasters/tools/sitemaps?msg=1&siteUrl=http%3A%2F%2Fwww.taeselectronics.com%2F&hl=en> Go Links

Google C Go Bookmarks 129 blocked Check AutoLink AutoFill Send to Settings

tmitchell@storesonline.com | [My Account](#) | [Help](#) | [Sign out](#)

Google™

Webmaster Tools

[My sites](#) > <http://www.taeselectronics.com/> > **Sitemaps**

Diagnostics Statistics Links **Sitemaps** My sites

✓ You have added a Sitemap to <http://www.taeselectronics.com/>. Reports may take several hours to update. Thank you for your patience!

[Add a Sitemap](#) Rate this tool: 😞 😐 😊

View: All Sitemaps OK Sitemaps 1 to 1 of 1

Sitemap	Type	Submitted	Last Downloaded	Sitemap Status	URLs submitted
<input type="checkbox"/> sitemap.xml	Web	0 minutes ago	—	Pending	—

[Download this table](#)

[Download Sitemap details for all of your sites as a .csv file](#)

[Download data for all sites](#)

© 2007 Google Inc. - [Terms of Service](#) - [Privacy Policy](#) - [Discussion group for webmasters](#) - [Google's blog for webmasters](#)