

# Mirrorcraft® Project Especially for Dogs



DIY Customized Pet Mirror  
Make a mirror photo frame to  
Display your Pets Photo

©Irene Jacobs April 2007

*Mirrorcraft® is a fun craft to easily create you own customized mirrors  
This craft was invented and developed in Australia by Wayne & Irene Jacobs*

This E Book gives step by step instructions to create a custom mirror to display your pets photo. In this project we create a simple mirror with an oval shape to display your pets photograph. This is all done inside your mirror. The shape of a dog bone is used for Journaling. Self adhesive etched decals are used for foot prints.

Kits are available to complete this project.  
Email: [irene@mirrorcraft.com.au](mailto:irene@mirrorcraft.com.au)



Your kit will include a Mirrorcraft® Mirror 6x4" (100x150mm). The backing on the mirror has been developed to take sections of paint off really easily.

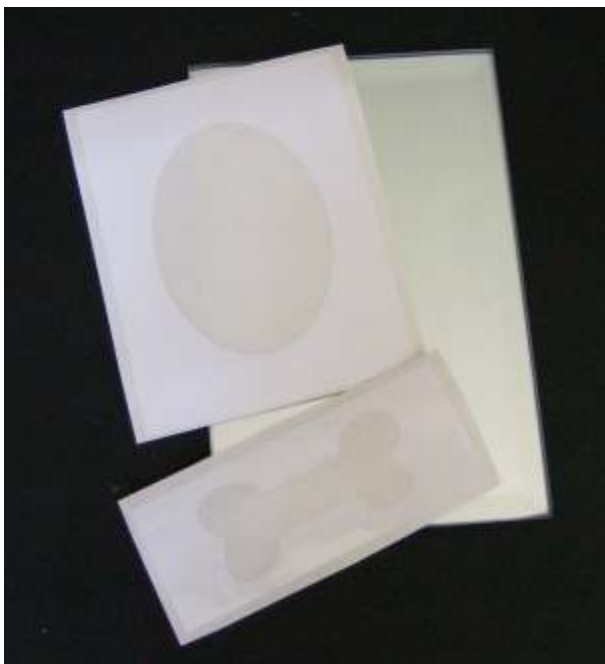
There is an oval stencil. The stencil is cut from a durable vinyl and defines the shape to rub out the backing paint and silver from the back of the mirror. After the shape is removed from the mirror backing your photo can be placed inside the mirror. Another stencil is included the shape of a bone. This is to give room for journaling.

We have an eraser and silver remover to rub off the backing, cotton buds to use with methylated spirits (not included,) gloves to keep your hands looking good, tape to fix your photo and journaling inside of the mirror and some fun self adhesive etched decals to decorate the front of your mirror. These are in the shape of paw prints.

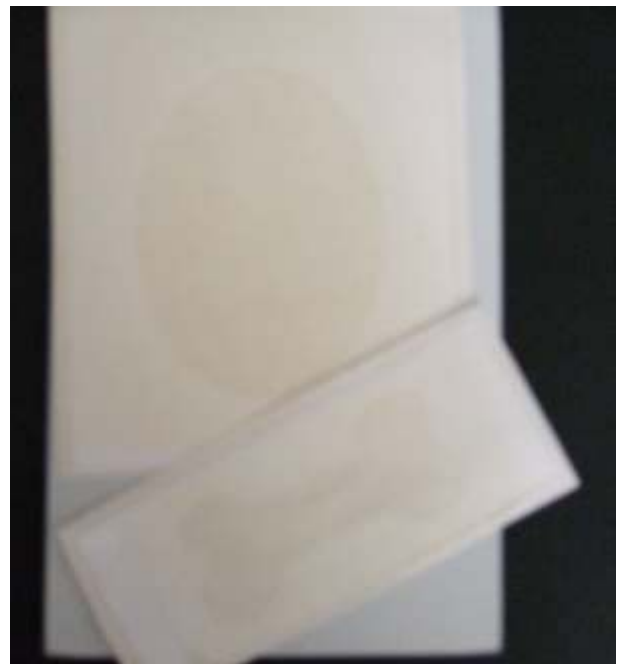
## Mirrorcraft® Project - Especially for Dogs

### DESIGN YOUR LAYOUT

The oval and the bone shape stencils are in two separate pieces so that they can be positioned where ever desired in the mirror. Play around with angles until you have the design you like. It is your mirror so design the mirror the way you choose. The oval can be positioned so that the photo can appear portrait or landscape in the mirror. The bone for journaling can be positioned straight or on an angle. It is your choice. Before the stencils are packed into your kit we cover the cut out section with application tape. (An adhesive transfer paper). We do this so that when the backing paper is removed from the back of the stencil when you are putting it onto the mirror the oval and bone will hold their shapes. After the stencil has been applied to the back of the mirror the application tape is removed.



*The oval for the photo and the bone for journaling are in two separate pieces.*



*Application tape is applied to your stencils so that they will hold their shape when putting them onto the mirror backing*

## Mirrorcraft® Project - Especially for Dogs

# Put the Oval Stencil onto the Mirror Backing

The oval stencil has an adhesive backing that will stick onto the back of the mirror. The backing paper is removed to expose the adhesive. The easiest way to put the stencil onto the mirror backing is to fold down the backing paper from one edge of the stencil and stick this onto the mirror. With only a small strip stuck down to start with it can easily be lifted and repositioned if desired. Once you are happy that you have it where you like rub the strip firmly to ensure it has adhered and then take hold of the folded strip of backing paper and pull it gently to expose the adhesive on the stencil. You should be able to guide the stencil easily into place.



*Fold backing paper to expose adhesive on the stencil.*



*Stick this exposed adhesive strip onto the back of the mirror (painted side).*

After the edge of the stencil is stuck onto the mirror backing pull the folded edge of the backing paper to remove the backing paper from the stencil. The stencil should be guided into place as the backing paper is being removed. This is the same method as applying contact or adhesive papers to school books.

## Mirrorcraft® Project - Especially for Dogs

### Remove the Application Tape from the Oval Stencil

The oval stencil is now stuck on top the mirror backing. Rub around the edge of the oval cut out to ensure that it is secure. Now the application tape can be removed. To remove the application tape simply lift one corner and then pull across the stencil at an angle..



The stencil is stuck onto the mirror backing. Rub around the edge of the oval shape to secure firmly before removing the application tape



Remove the application tape from the front of the stencil

The application tape has now been removed from the front of the stencil. The paint now visible through the oval is going to be rubbed out so that the oval shape will be left as clear glass. The paint will not be removed where it is covered by the vinyl.



# Mirrorcraft® Project - Especially for Dogs

## Remove the Paint from the Edge of the Oval



To remove the paint around the edge of the oval we will use methylated spirit to soften the backing paint. Use the Paddle end of the cotton bud like a paint brush to apply the methylated spirits. The paint will take a few moments to Soften After the paint is softened we use the eraser to rub it away - *like magic*. Dip the paddle end of the cotton bud into methylated spirits. Make sure that it is really soaking wet and paint the methylated spirits onto the edge of a quarter of the oval. The paint should be visibly wet. After 20 seconds dip the paddle end of the cotton bud into the methylated spirits and paint the edge of the oval again. Now rub along the edge of the stencil where the paint had been softened to rub it away. *That was so easy! Don't worry about the silver line at the moment we will come back to that.* Repeat the same process with the second quarter, the third quarter and then the fourth quarter. There will be a strip of paint removed from the outer edge of the oval. Soften the paint on approximately 1/4 of the oval at a time. When the paint is soft it will come off really easily.



*Tip:* When you are working on a mirror use a flat surface free of sharp objects. Use the bubble wrap bag to rest the mirror on while removing the backing paint and silver



Apply methylated spirits to soften paint

The paint will be really easy to remove so long as you allow it to soften. Use ample methylated spirits to soften the paint and then use the eraser included in your kit to rub the paint away Work on small section of the edge at a time so that the paint doesn't dry out.



Use eraser to rub off softened paint.



Work on a small section of the edge at a time.



There is now a border of silver around the oval.

## Mirrorcraft® Project - Especially for Dogs

# Remove the Silver from the Edge of the Oval

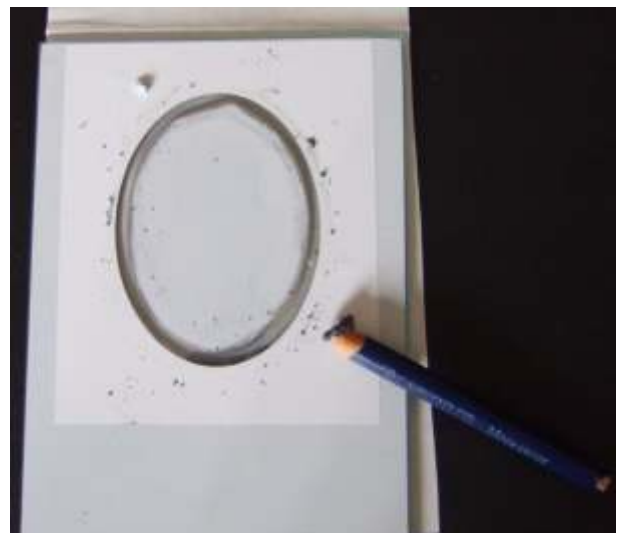
You will use your silver remover, eraser and methylated spirits. The silver remover is a water based mild abrasive. Dip the end of your eraser into methylated spirits and then into the silver remover. The eraser should be coated with the paste. You will only need a little of the paste to be effective. Rub around the edge of the stencil with the eraser to remove the silver. The easiest way is to just go around and around in a continuous motion using the eraser at an angle so that it can rub right into the edge of the stencil. The stencil will hold its shape while the silver is being removed. Run the eraser around and around the edge of the oval. You should only need one or two applications of the paste. After it looks as if the silver has been removed, dip the eraser into methylated spirits and run it around again.

- ✎ Keep the of the eraser fairly short so that the rubber doesn't break.
- ✎ Remember to sharpen the eraser so that the wood doesn't scratch the glass.
- ✎ After all of the silver is removed on the edge stop rubbing!

Note: The silver remover will last for ages. If it dries out simply add a few drops of water and allow it to absorb until it becomes a paste again.



Use the eraser and silver remover to rub out silver border.

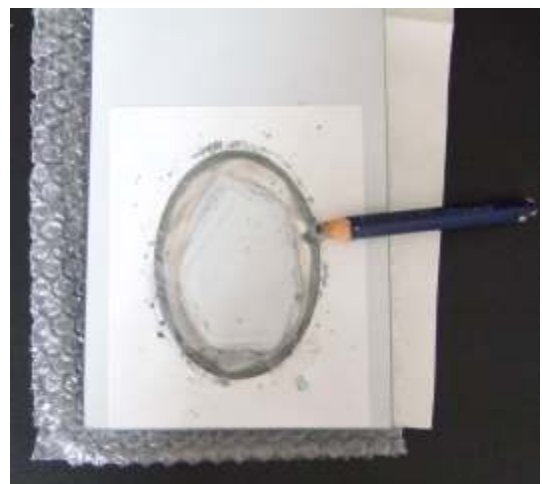


After the silver is removed there will be a line of clear glass around the edge of the oval

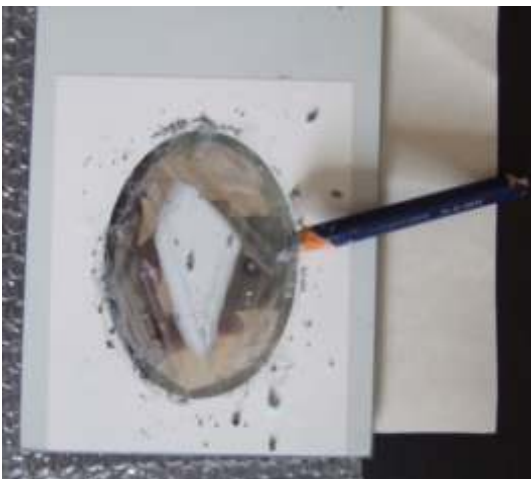
## Mirrorcraft® Project - Especially for Dogs

# Remove the Paint from the Inside of the Oval

Removing the paint from the inside of the oval is really easy. We use the methylated spirits to soften the paint and then the eraser to rub it out. The main thing to remember is simply only rub on softened paint. Soften the paint in a couple of stages from the outer edge of the oval working in. Dip the paddle end of the cotton bud into the methylated spirits and paint onto the backing paint around the border. Use the eraser to rub away the backing paint and then soften the next section with methylated spirits and rub out the softened paint and then soften the remaining paint and rub away. Use the paper towels in your kit to wipe away the residue. *The first time you make a customized mirror may take you a little while, but by the time you make your third mirror you will find that you can complete an oval like this in 5 to 10 minutes.*



Soften the backing paint with methylated spirits and then use the eraser to rub the paint away. Work in stages from the outer edge of the oval to the inside





## Mirrorcraft® Project - Especially for Dogs

# Remove the Silver from the Inside of the Oval

To remove the remaining silver you will need your disposable gloves, open weave cloth and silver remover. You will also use a paper towel. Put on your glove. Apply a small amount of silver remover to your cloth and simply rub the silver until it is removed.

Now clean the glass with a paper towel and methylated spirits. If you have any little silver specs remaining the eraser and silver remover or the eraser and methylated spirits should remove them.

✍️ Tip: I find it easiest if I put the cloth over one of my gloved fingers, I find I get good even pressure, other people roll their cloth into a ball. Whatever works for you is fine.

✍️ Make sure to use the silver remover on your cloth or you will end up with polished silver rather than clear glass.



Use the silver remover with the cloth to rub off the silver. And then clean the glass with a paper towel and methylated spirits.



*Above: Back view of mirror  
Below: Front view of mirror*



# Mirrorcraft® Project - Especially for Dogs

## Remove the Oval Stencil and Position the Bone Stencil

Make certain that all of the silver is removed from the oval, and the glass is clean, and then remove the oval stencil and discard.

Now position your bone stencil where desired. This could be straight or angled. Use the same method as the oval to adhere this stencil to the mirror backing. Fold back the backing paper on one edge of the stencil and stick this onto the mirror backing. Now pull off the backing paper and guide the stencil into place. Rub around the edge of the bone shape and then remove the application tape from the front of the bone.



Remove the oval stencil and discard.



Position the bone stencil where desired on the mirror backing.

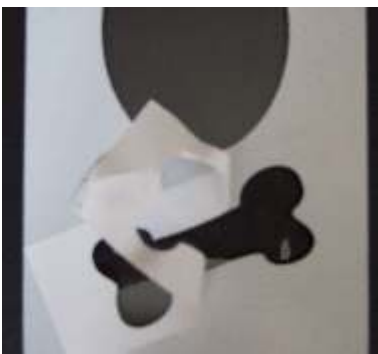
- ✎ When you are positioning anything on the back of the mirror it will be on the opposite side on the front.
- ✎ You may find it easier to work out your design on the front of the mirror first.
- ✎ Remember to remove the application tape from the bone stencil once it is in place.

# Mirrorcraft® Project - Especially for Dogs

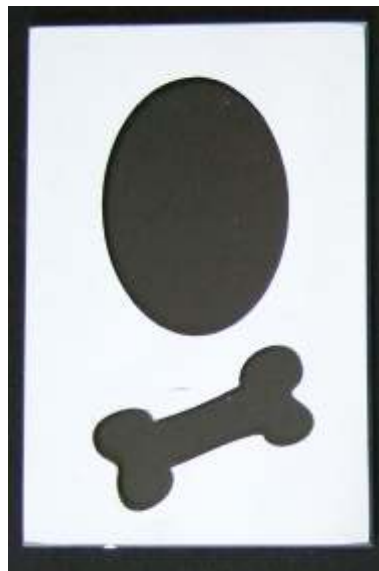
## Remove the Paint & Silver from the Bone Shape



Use the same method as the oval to remove paint and silver. Soften the edges with methylated spirits and use the eraser to rub out the paint. Use the eraser and silver remover on the edges to remove the silver. Soften the paint on the inside of the bone with methylated spirits and then rub out the paint with the eraser. Wipe the paint residue off with a paper towel. Use the silver remover with an open weave cloth to rub out the remaining silver. Clean the clear glass with methylated spirits. Remove the bone stencil and discard.



Remove the stencil once the paint and silver have been rubbed off and , the shape has been cleaned and discard.



Back of mirror



Front of mirror

*Caution! Never allow methylated spirits to come into contact with any backing paint that you are not removing. You can mask exposed areas that you wish to protect while you are working on your mirror.*

# Mirrorcraft® Project - Especially for Dogs

## Placing your photo & Journaling inside the mirror

Congratulations on creating your oval and bone in mirror! The next step is having your images appear inside of the mirror. Now that the shapes are removed you have clear glass surrounded by mirror. Your photo and journaling will be positioned within these shapes so that they can be seen through the clear glass and be effectively inside of the mirror! Trim your photo so that it won't cover your bone shape, place the photo image side down onto the back of the mirror. Check the positioning from the front of the mirror before you tape it into place. Once your photo is positioned where desired secure with the tape provided in the kit. Any acid free tape can be used. If using masking tape only use cling brand. Sometimes labeled as acid free, sometimes as all purpose. I have been using this tape for more than 5 years. Other tapes tend to become tacky and can damage the mirror over time. When your photo is in place position your journaling and secure with tape. In this example I have printed my pet's name on acetate. This enables me to change the appearance from time to time by changing the backing paper. It also enables a variety of backings to be used that you cannot print on such as hologram, foils, and small paper scraps.



Position photo on back of mirror



Tape photo to secure



Tape journaling to secure. Add backing in using acetate



Front of mirror

If you would like to add etched effects to your mirror do so now. In this example I have used the etched decals on the frame. Follow the steps I have used in the following pages.

# Mirrorcraft® Project - Especially for Dogs

## Framing Your Mirror

Your mirror doesn't have to be framed. It can go on a stand or use clips to hang as the edges of the mirror are smooth and they are beveled. Your mirror can look absolutely fabulous in a scrapbook page. If you choose to frame your mirror the mirror from this project will fit in a standard size frame - 6x4".

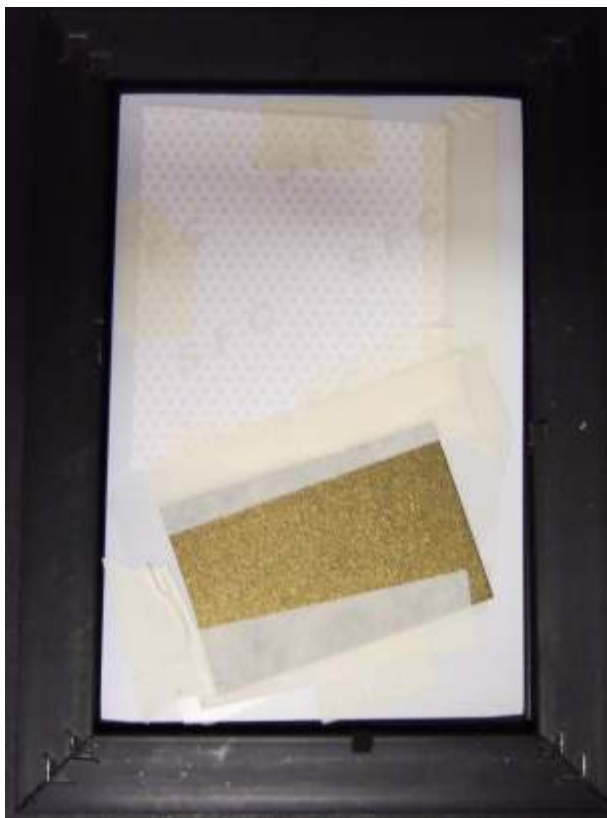
*Caution; If you buy a frame 150mm x100mm it will not fit!*

*To frame your mirror, open the clips on the back of your frame and take off the backing (normally timber or card). Now remove the glass from inside the frame and discard. Be carefully with glass in frames. It is often thin and can be sharp on the edges.*

*Now place your mirror reflective side down inside of the frame. Replacing the backing timber/card of the frame and close the clips.*



Open the frame clips, take off the back of the frame remove the glass. Discard the glass. It will be thin and have sharp edges. Now place the mirror into the frame, replace the back of the frame and do up the backing clips. Your mirror is now framed



# Mirrorcraft® Project - Especially for Dogs

## Decorating with Etched Decals

The etched decals included in the kit have a variety of uses. You can position them on the front of the mirror. You can position them on the clear glass inside of the mirror before you tape your photo or journaling into place. In this example I have used them on the photo frame. However, they can also be used on glasses and other glassware. We manufacture decals to order so they are excellent for customizing glasses for special occasions. They are simple to apply but the surface you apply decals to must be really, really clean. If you choose to use your decals on glassware, and the glassware has any greasy film on it as new glassware often does, this film must be removed completely or the decals will come off when the glass is washed. I personally wipe new glasses over with methylated spirits to remove any film before washing them in the dishwasher. My decals always stay on, so wash the glass really well before applying the decals.

To apply the decals

1. Remove the backing paper from clear transfer paper included in your kit.
2. Place the adhesive side of the transfer paper onto the etched decal and rub to transfer the decal from the backing paper to the transfer paper.
3. Now slowly remove the backing paper from the decal. If the decal isn't coming off of the backing paper easily put it down and rub again. Once the decal is on the transfer paper, position it where desired and rub to secure.
4. Leave for about 5 minutes and then remove the transfer paper. Pull the transfer paper slowly across the decal at an angle to remove.



Etched decal & clear adhesive transfer



Remove the backing from the transfer paper



Rub transfer paper onto etched decal to remove decal from backing



Use transfer paper to apply decal to desired location. Rub to secure



Carefully remove transfer paper. Decal is now attached to the surface. The transfer paper can be reused

